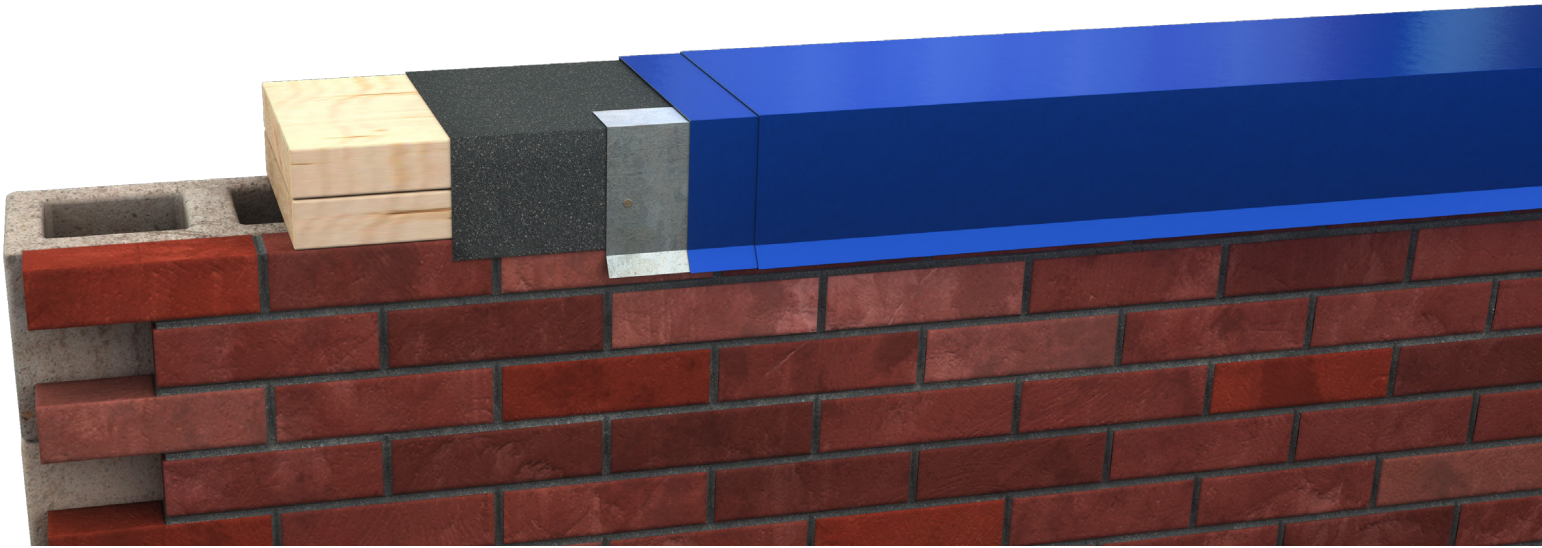


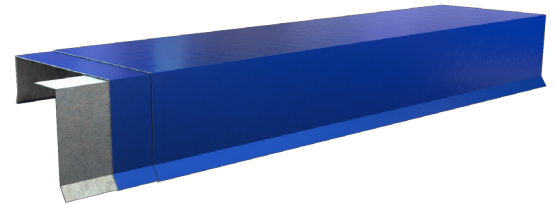
SC SERIES COPING

INDUSTRIAL, COMMERCIAL



SC SERIES COPING - ES1 TESTED

The IBC building code requires that all low slope roofing systems (built up asphalt, single ply, modified, etc.) use perimeter metal details that have tested according to the ANSI / SPRI ES-1 testing procedure. This applies to copings, gravel stops, and metal edgings. Most states have adopted the provisions of the IBC building code. CMP has developed a line of coping, gravel stops, and edging that have been tested in both aluminum and steel options. We have standard and snap lock versions of each type of trim.



MATERIALS AVAILABLE

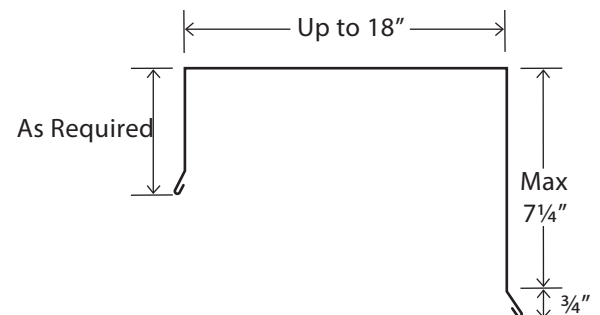
- Steel - 24 gauge minimum
- Aluminum - .040" minimum

COLORS AND COATINGS

See all 40+ colors and coatings on the CMP or Alumaklad/Colorklad color charts at www.cmpmetalsystems.com

FINISH AND PRODUCT WARRANTIES

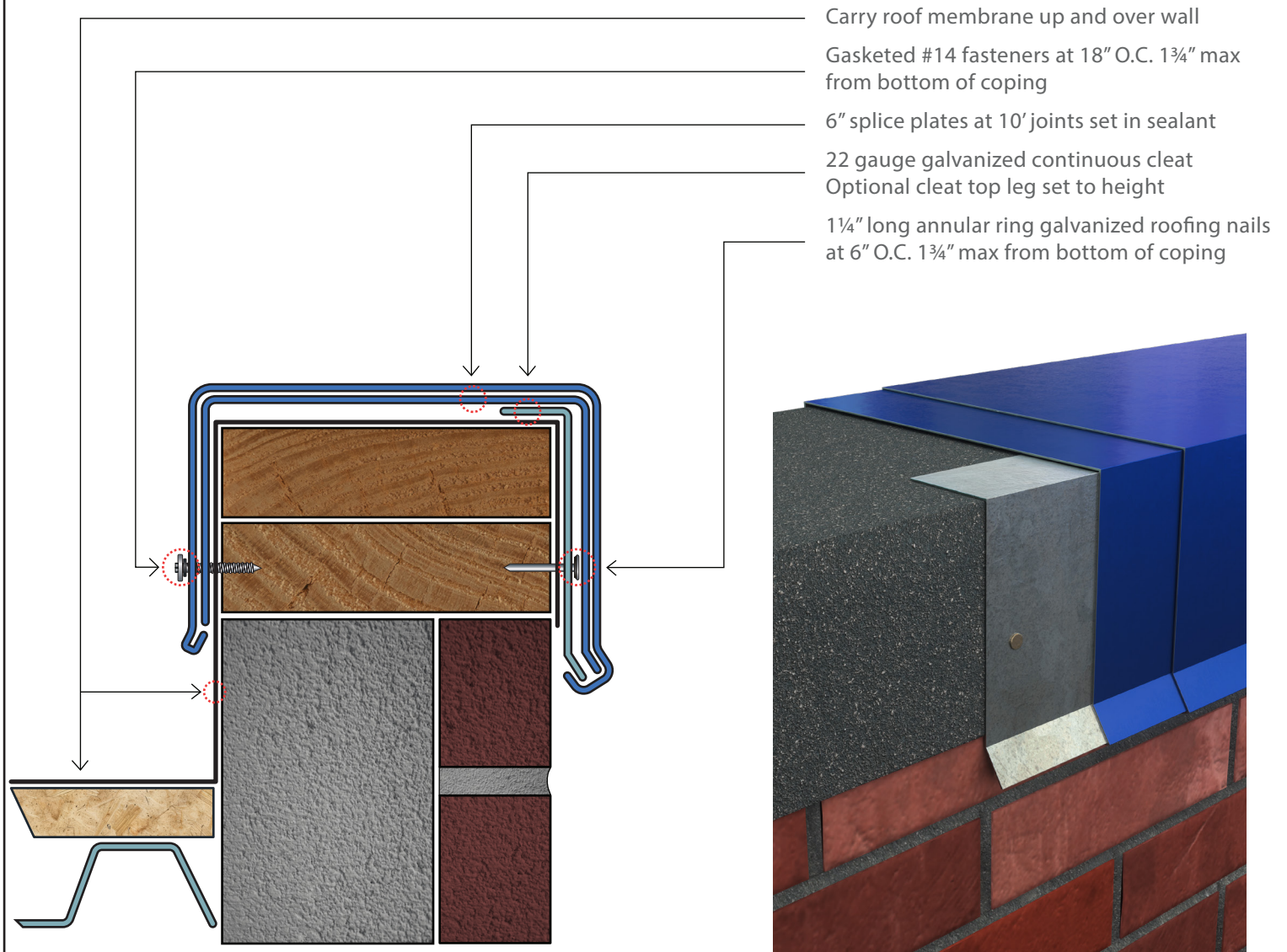
- Aluminum and Steel substrate up to 35 year warranty
- Contact us for more detailed information



SC SERIES COPING



Construction Metal Products



Perimeter Metal Systems - Coping

CMP SC Series Coping

ES-1 Tested