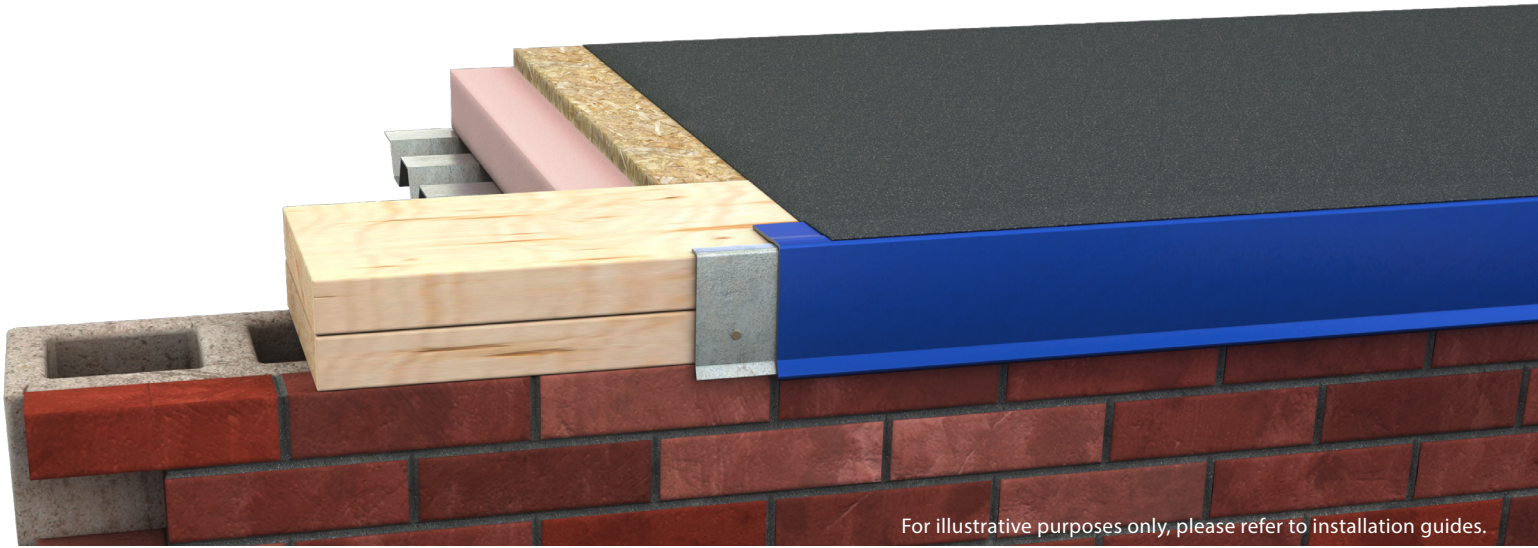


SE SERIES EDGING

INDUSTRIAL, COMMERCIAL

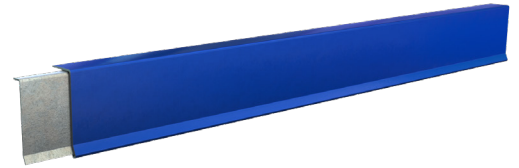


Construction Metal Products



SE SERIES EDGING - ES1 TESTED

The Standard Edging (SE) is a traditional style edging that is easy to install. It requires the membrane to be sealed to the edging flange after the installation of the edging. This is well suited for asphalt or modified roofs or other membranes when unobstructed water drainage is needed. The IBC building code requires that all low slope roofing systems (built up asphalt, single ply, modified, etc.) use perimeter metal details that have been tested according to the ANSI / SPRI ES-1 testing procedure. This applies to copings, gravel stops, and metal edgings. Most states have adopted the provisions of the IBC building code. CMP has developed a line of coping, gravel stops, and edging that have been tested in both aluminum and steel options.



MATERIALS AVAILABLE

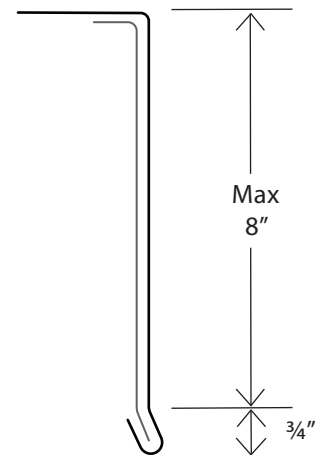
- Steel - 24 gauge minimum
- Aluminum - .040" minimum

COLORS AND COATINGS

See all 40+ colors and coatings on the CMP or Alumaklad/Colorklad color charts at www.cmpmetalsystems.com

FINISH AND PRODUCT WARRANTIES

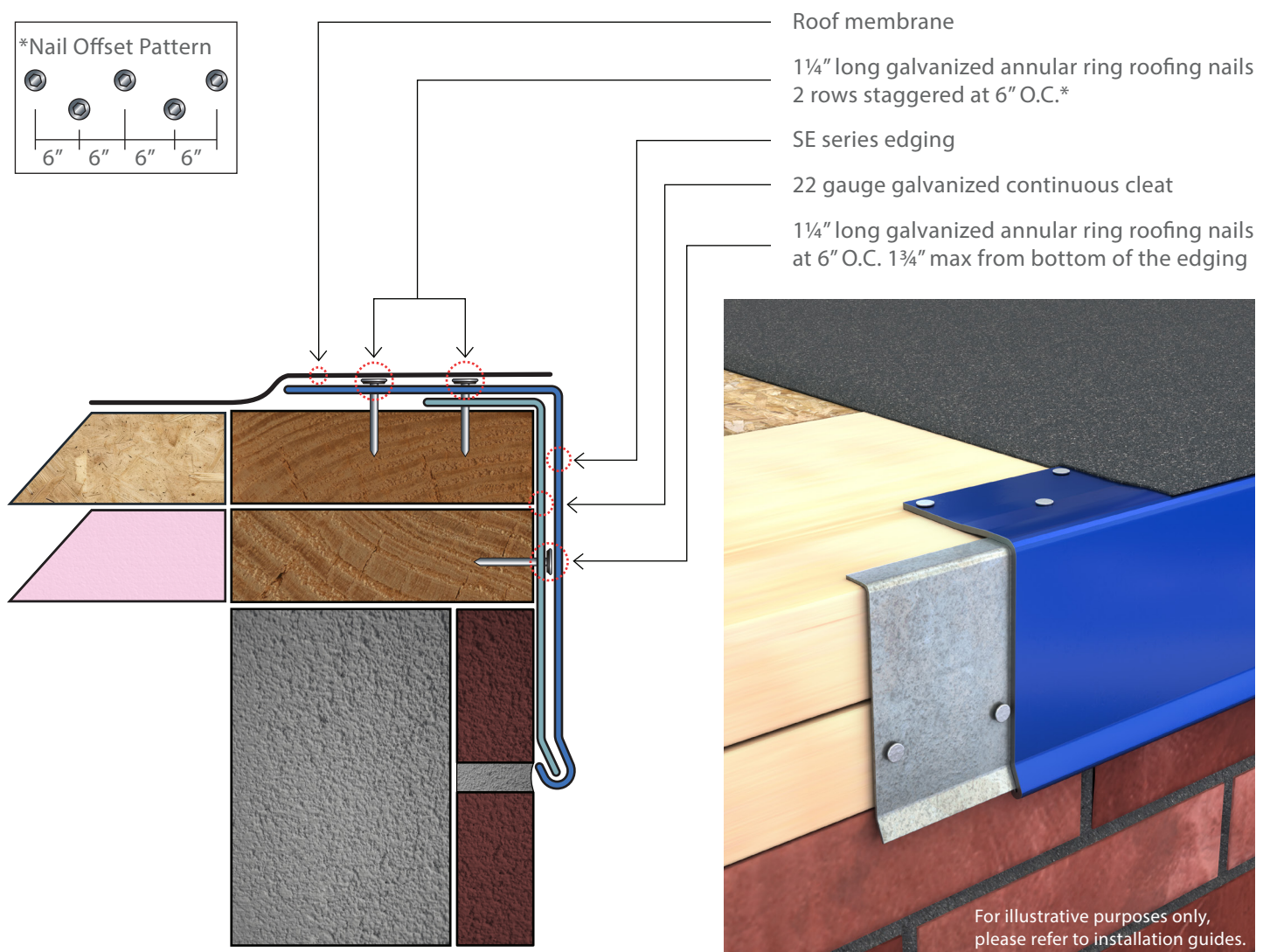
- Aluminum and Steel substrate up to 35 year warranty
- Contact us for more detailed information



SE SERIES EDGING



Construction Metal Products



Perimeter Metal Systems - Edgings

CMP SE Series Edging

ES-1 Tested