

# CONSTRUCTION METAL PRODUCTS INC.

Metal Roofing | Metal Walls | Custom Fabrication

## NAIL STRIP MANUAL ROOF GUIDE



Statesville, NC | Myrtle Beach, SC | Charleston, SC  
704-871-8704 | [questions@cmpmetalsystems.com](mailto:questions@cmpmetalsystems.com)  
[www.cmpmetalsystems.com](http://www.cmpmetalsystems.com)

## NAIL STRIP MANUAL ROOF GUIDE

Gathering all the information for a Metal Roof quote can be intimidating if you don't understand the technical terms. This guide will simplify the process so you can feel confident when a customer is inquiring about metal roofing. A general list that we need to be able to quote a project for you is.

*How much coverage?*

*Which Gauge?*

*Panel List?*

*Roof Pitch?*

*Which Profile?*

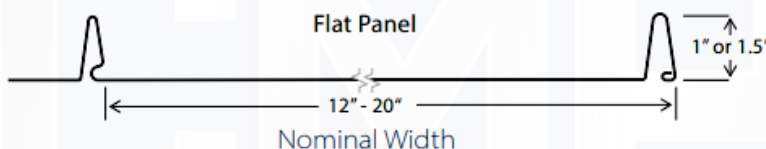
*Which Color?*

*Trim List?*

*Screws?*

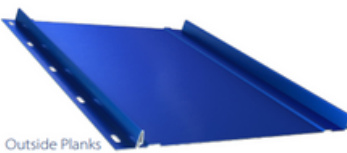
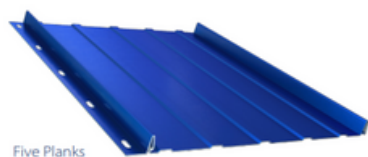
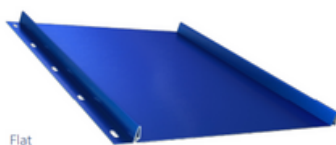
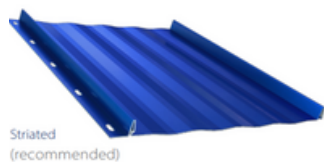
### **PANEL COVERAGE**

Customers have options for nominal coverage. The most common coverage is 16" (Nominal).



### **PROFILES & GAUGE**

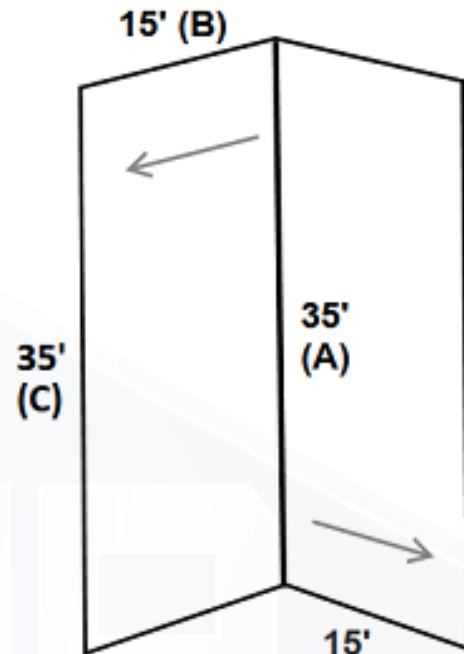
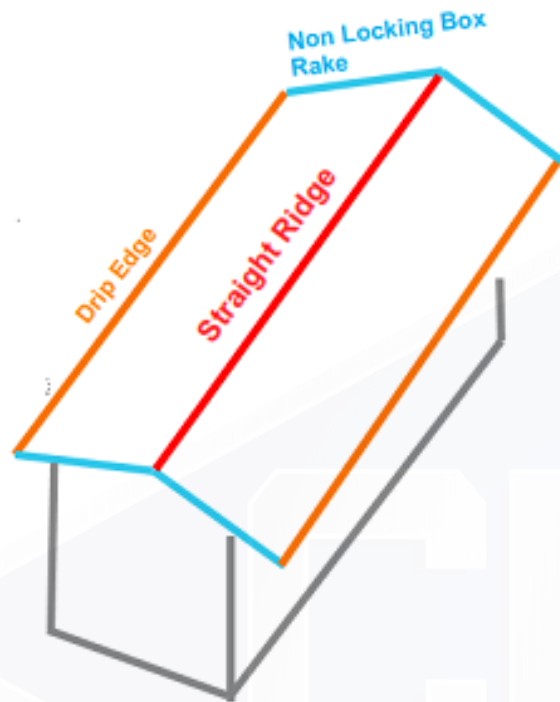
We offer different panel profiles to choose from. We recommend a Striated profile to avoid oil canning. For Nail strip we offer 26ga, 24ga, and .032 aluminum. The price changes depending on gauge and color.



If a customer has a full eagle view, roof panels, and gauge requested you may email us, and we can get that quote for you. If you have any questions or have a more difficult layout. We can help, just send us a detailed email with all the information you have.

## PANELS

How to determine how many panels are needed for your customer: Since our panels are nominal in width, we subtract half an inch of the selected coverage to make sure we quote enough panels.



1st We are going to change the length (feet) to inches.

$A \times 12'' = \text{Length in inches (Z)}$

2nd Take the Length (Z)  $\div$  X = panels needed per side

Coverage	X
12"	11.5
16"	15.5
20"	19.5

## 16" COVERAGE PANELS

$$35' (A) \times 12 = 420'' (z)$$

$$420'' (z) \div 15.5 (x) = 27.09$$

Round up to 28 Panels

$$28 \times 2(\text{sides}) = 56$$

## PANEL LIST

56 @ 15'

## TRIM

We sell trim in 10' sections. We can make them longer, adding 20% up charge per LF. The longest we can manufacture is 21' sections. We do bend custom trim, just send us a sketch with specific measurements.

For standing seam roofs, they require additional trim. Certain trims require zee and cleats to install properly. For instance, ridge caps need two zeers per section. We also offer face vented, top vented and non-vented zee.

TRIM	REQUIRES
STRAIGHT / STEPPED RIDGE	2 PIECES OF ZEE'S
ENDWALL / SIDEWALL	1 NON-VENTED ZEE
TRANSITION / GAMBREL	1 NON-VENTED ZEE + 1 OFFSET CLEAT
NON-LOCKING RAKE	1 NON-VENTED ZEE + 1 RAKE CLEAT
W VALLEY	2 PIECES OF OFFSET CLEAT

For the trim we have a simple example highlighted. You will take the linear footage and divide it by 9.5 \*Note Common lap for trim is 3 inches.

### TRIM LIST:

Straight Ridge 4@10'

Drip Edge 8@10'

Non-Locking Box Rake 7@10'

Non-Vented Zee 15@10'

Rake Cleat 7@10'

Straight Ridge  $35' \div 9.5 = 3.68$  Round up to 4

Non-Vented Zee  $4 \times 2 = 8$

Drip Edge  $35' \times 2 = 70' \div 9.5 = 7.36$  Round up to 8

Non-Locking Box Rake  $15' \times 4 = 60' \div 9.5 = 6.31$  Round up to 7

Non-Vented Zee = 7

Rake Cleat = 7



## **ROOF PITCH**

Roof pitch or slope tells you how many inches the roof rises for every 12" in depth. An example of a roof pitch would be 4/12 – Roof rises 4" every 12" inward towards the ridge.

## **SCREWS**

For Nail strip we offer Pan Head screws in 1", 1.5", 2" lengths.

<i>For Nail strip panels we recommend 1 screw per LF.</i>	<i>For trim we recommend 2 screws per LF.</i>
<i>Take the number of panels x length.</i>	<i>For the trim add the LF together and multiply by two.</i>
<i>56 x 15' = 840 LF (screws)</i>	<i>410 LF x 2 = 820 (screws)</i>

$840 + 820 = 1660 \div 250(\text{screws per bag}) = 6.64$  round up 7 bags of screws

## **PANEL INFO SHEETS:**

- <https://cmpmetalsystem.wpenginepowered.com/wp-content/uploads/2023/05/MultiRib-Slick-4-12-23.pdf>
- <https://cmpmetalsystems.com/metal-systems/series-r-panel/>
- <https://cmpmetalsystems.com/metal-systems/series-5v-smooth-design/>

## **TRIM INFO SHEETS :**

- <https://cmpmetalsystem.wpenginepowered.com/wp-content/uploads/2018/08/Multi-Rib-Trim-Sheet-REVISED.pdf>
- <https://cmpmetalsystem.wpenginepowered.com/wp-content/uploads/2015/04/R-Panel-Trim-Sheet.pdf>
- <https://cmpmetalsystem.wpenginepowered.com/wp-content/uploads/2015/04/5V-Trim-Sheet.pdf>

CMP does offer a class with a full demonstration on how to install panels in case any of your contractors are interested.

## 29/26 GAUGE COLOR CHART

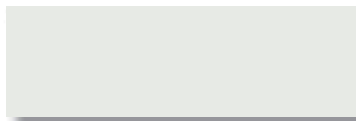
### Construction Metal Products inc.

CMP manufactures a variety of metal roof and wall panels in 26 gauge and/or 29 gauge material. Please see the back of this chart to view the profiles that are available.

CMP's 40-year Silicon Polyester paint system, with Cool Roof Technology, provides solar reflectance ratings to meet today's Energy Star requirements. The 40-year paint system and galvalume steel guarantees a winning combination of weather-tested paint performance and superior corrosion resistance.



Colors shown here are as accurate as the printing process permits. Slight variations should be expected for the actual coil product.



*Polar White* (Blanco Polar)



*Light Stone* (Piedra Clara)



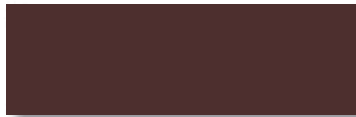
*Sahara Tan* (Arena)



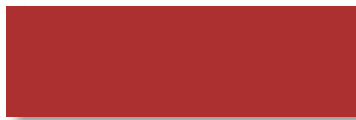
*Ash Grey* (Griz Ceniza)



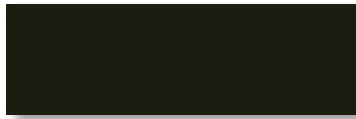
*Hawaiian Blue* (Azul Cielo)



*Burgundy* (Vino)



*Brite Red* (Rojo Sangre)



*Coal Black* (Onyx Negro)



*Charcoal Grey* (Griz Oscuro)



*Burnished Slate* (Griz Carbón)



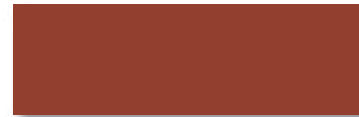
*Forest Green* (Verde Selva)



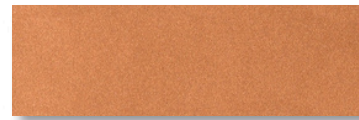
*Gallery Blue* (Azul Royal)



*Cocoa Brown* (Coco)



*Country Red* (Terracota)



*Copper Penny* (Cobre Metálico)

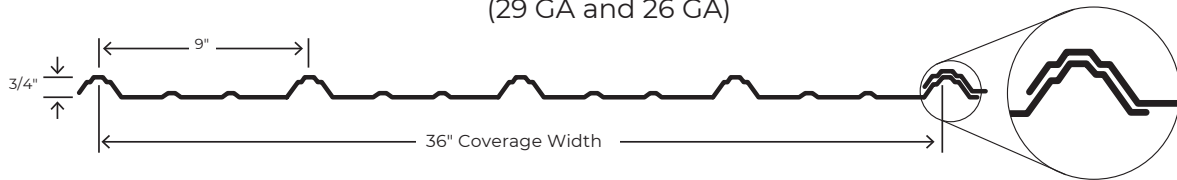


*Galvalume* (Galvalume)

## CMP MULTI-RIB

**CMP MULTI-RIB Design Is Unmatched In Performance Durability.**

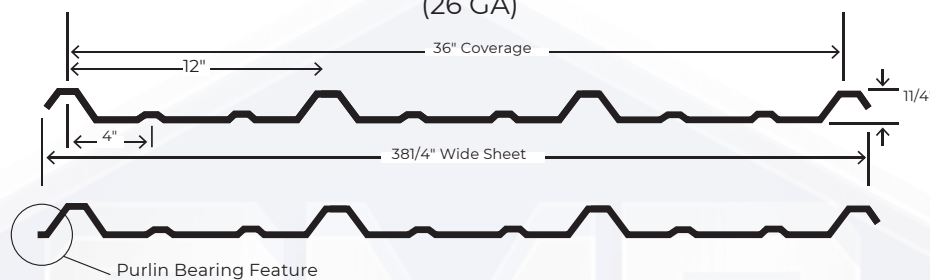
(29 GA and 26 GA)



## CMP R-PANEL

**A Superior Roof or Wall Panel with Maximum Strength.**

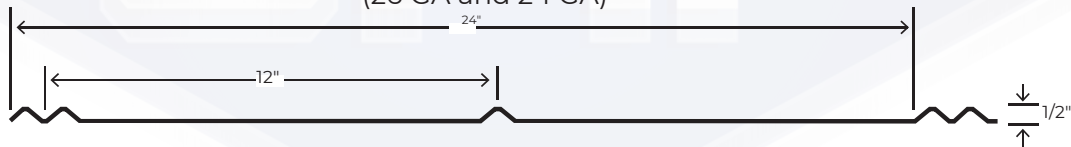
(26 GA)



## CMP 5-V

**The 5-V's Stunning Design Makes it Very Popular with Residential and Commercial Customers.**

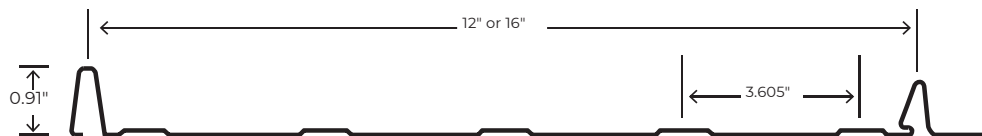
(26 GA and 24 GA)



## CMP NAIL STRIP

**Revolutionary Design Eliminates the need for Through Fasteners.**

(26 GA and 24 GA)

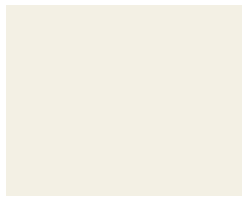


## SAFETY PRECAUTIONS

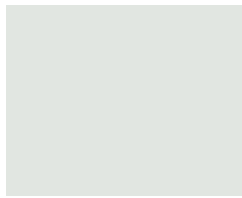
Gloves should be worn to prevent injury while handling steel panels. Safety glasses should be worn to prevent eye injury when cutting or drilling steel panels with power tools. Use care when walking, sitting, or kneeling on a steel roof to avoid a fall. Steel panels may become slippery when wet. Do not work on the steel panels when wet or when climatic conditions are not suitable for safe installation. Failure to comply with these procedures relieves the manufacturer of responsibility for any resultant damage to or deterioration of the product and VOIDS ALL WARRANTIES. THERE IS NO IMPLIED WARRANTY OF MERCHANTABILITY OR FITNESS FOR PURPOSE.

# AlumaKlad ColorKlad™

The Solar Reflective Index (SRI) as per ASTM E1980 is noted next to each color name. All colors are direct deposit paint samples. Do not use this sheet to color match. Call your representative for a painted metal sample.



Snowdrift | 93



Regal White | 78



Stone White | 82



Bone White | 83



Sandstone | 71



Almond | 78



Sierra Tan | 30



Medium Bronze | 31



Mansard Brown | 26



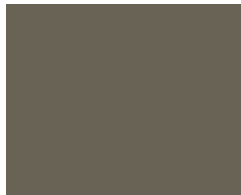
Dark Bronze | 25



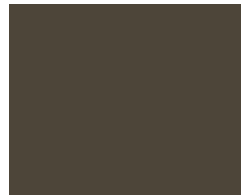
Ash Gray | 32



Dove Gray | 54



Slate Gray | 40



Musket Gray | 32



Charcoal Gray | 29



Aged Copper | 53



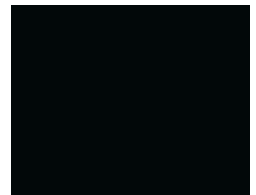
Patina Green | 55



Classic Green | 30



Hartford Green | 24



Black | -1



Slate Blue | 29



Royal Blue | 26



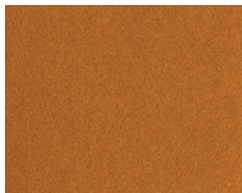
Banner Red | 43



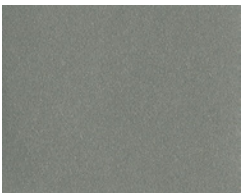
Colonial Red | 34



Terra Cotta | 37



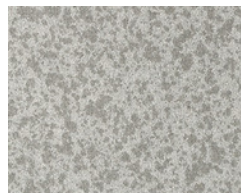
Copper Penny | 45



Bright Silver | 61



Pre-Weathered Galvalume | 39



AZ55 Acrylic Galvalume

Custom colors and/or color matching is available subject to minimum volume criteria. Pricing will be dependent on project requirements.

In testament to the high quality of ColorKlad and AlumaKlad, a written warranty is available upon request, for qualifying applications. Available at no charge, this warranty covers peeling, color fade, chalking and paint integrity. Reference actual warranty for details and conditions. Check suitability of use in potentially corrosive atmospheres. \* Acrylic AZ55 is not covered under the ColorKlad® warranty. Metallics and Premiums may be priced higher than standard colors.



ColorKlad® — available in a premium cool coating — is the field-proven, time-tested leader in metal roofing. ColorKlad is made of a PVDF coating containing 70% Kynar 500® or Hylar 5000® resin over a high-quality primer, permanently bonded to commercial quality, extra smooth Grade 50 AZ50 Galvalume® or Galvanized G90 sheet or coil.

AlumaKlad™ — available in a premium cool coating — maintains design integrity and attractive appearance when design, climatic and/or atmospheric conditions call for aluminum. AlumaKlad is made of a PVDF coating containing 70% Kynar 500® or Hylar 5000® resin over a high-quality primer, permanently bonded to 3105-H24 aluminum sheet or coil.

COOL COLORS	SRI	24ga		.032"		.040"	.050"	.063"
		20"	48"	20"	48"	48"	48"	48"
AZ55 Acrylic Galvalume*		●	●					
Aged Copper	53	●	●	●	●			
Almond	78	▲	●	▲	●	●	●	
Ash Gray	32	●	●					
Bone White	83	▲	●	▲	●			
Charcoal Gray	29	●	●	●	●			
Classic Green	30	●	●	▲	●	●		
Colonial Red	34	▲	●					
Dark Bronze	25	●	●	●	●	●	●	●
Dove Gray	54	●	●	●	●			
Mansard Brown	26	●	●	▲	●	●	●	
Musket Gray	32	●	●					
Black	-1	●	●	●	●			
Medium Bronze	31	●	●	●	●	●	●	●
Patina Green	55	▲	●					
Regal White	78	▲	●	●	●			●
Sandstone	71	▲	●			●	●	
Sierra Tan	30	●	●	●	●	●	●	
Slate Blue	29	▲	●					
Slate Gray	40	●	●	●	●			
Snowdrift	93	●	●	●	●			
Stone White	82	●	●	●	●	●		
Terra Cotta	37	▲	●					
Premium / Metallic								
Banner Red	43	▲	●					
Bright Silver	61	●	●	●	●	●	●	
Copper Penny	45	●	●	●	●			
Hartford Green	24	●	●				●	
Prewathered	39	●	●	●	●			
Royal Blue	26	●	●	●	●			

Items marked with (▲) are available but will be specially processed from 48.375" master coil and the drop coil will ship as part of order.





## CONSTRUCTION METAL PRODUCTS INC.

Metal Roofing | Metal Walls | Custom Fabrication

### FIND OUT MORE ABOUT CMP



704-871-8704



[questions@cmpmetalsystems.com](mailto:questions@cmpmetalsystems.com)



2204 West Front Street Statesville, NC 28677



[www.cmpmetalsystems.com](http://www.cmpmetalsystems.com)



[www.facebook.com/ConstructionMetalProducts](https://www.facebook.com/ConstructionMetalProducts)