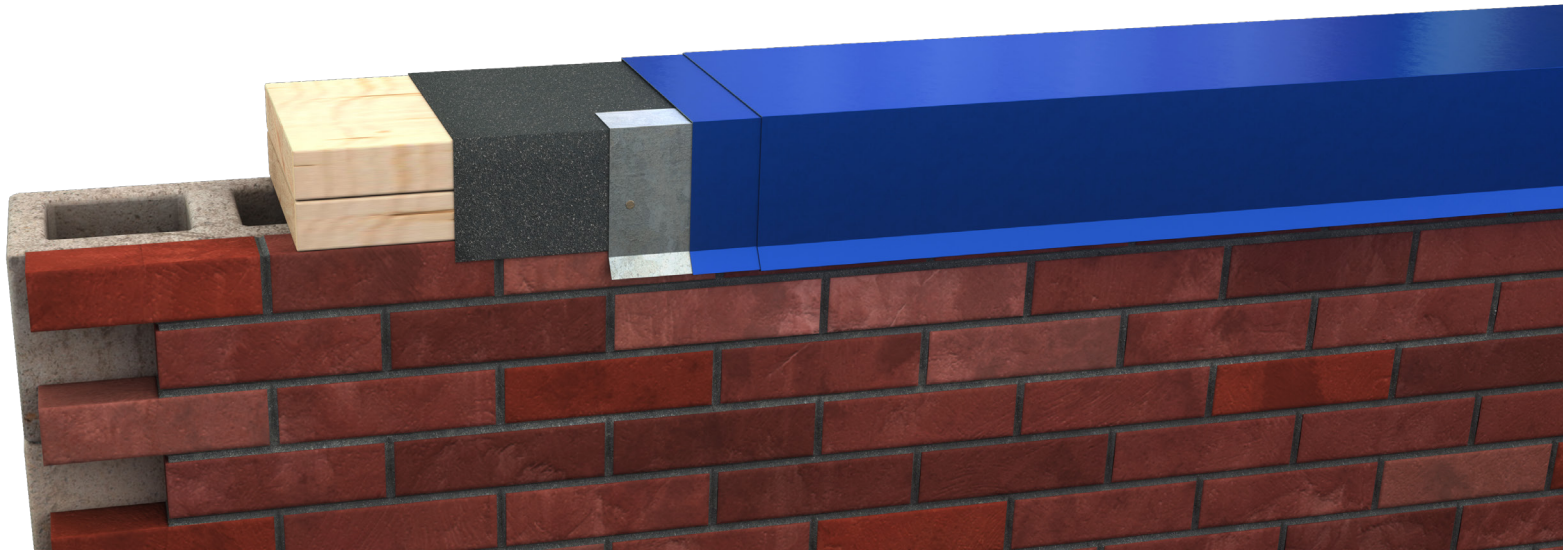


SC SERIES COPING

INDUSTRIAL, COMMERCIAL

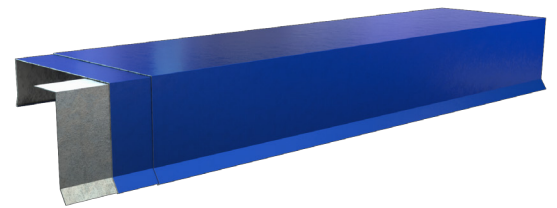


Construction Metal Products



SC SERIES COPING - ES1 TESTED

The IBC building code requires that all low slope roofing systems (built up asphalt, single ply, modified, etc.) use perimeter metal details that have tested according to the ANSI / SPRI ES-1 testing procedure. This applies to copings, gravel stops, and metal edgings. Most states have adopted the provisions of the IBC building code. CMP has developed a line of coping, gravel stops, and edging that have been tested in both aluminum and steel options. We have standard and snap lock versions of each type of trim.



MATERIALS AVAILABLE

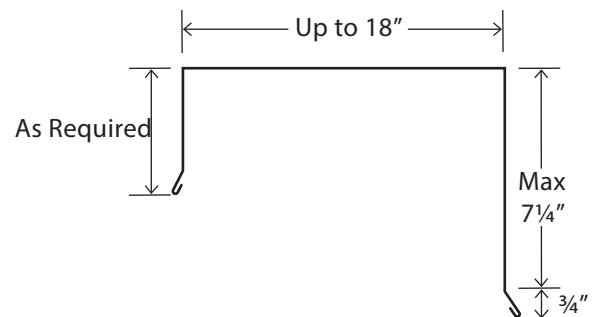
- Steel - 24 gauge
- Aluminum - .040"

COLORS AND COATINGS

See all 40+ colors and coatings on the CMP or Alumaklad/Colorklad color charts at www.cmpmetalsystems.com

FINISH AND PRODUCT WARRANTIES

- Aluminum and Steel substrate up to 35 year warranty
- Contact us for more detailed information



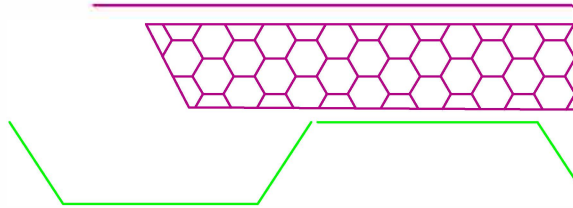


GASKETED FASTENERS
(#14) @ 18" O.C
1 3/4" MAX FROM
BOTTOM OF COPING.

AS REQUIRED

6" SPLICE PLATES
AT 10' JOINTS
SET IN SEALANT

CARRY MEMBRANE
UP & OVER.



TESTED TO 18"
FIELD VERIFY

OPTIONAL CLEAT TOP
LEG TO SET HEIGHT

UP TO 7.25"

.75"

22 GA. GALV.
CONTINUOUS CLEAT

1 1/4" ANNULAR RING
GALV. ROOFING NAIL
AT 6" O.C.

1 3/4" MAX FROM
BOTTOM OF COPING

PERIMETER METAL SYSTEMS- COPING

CMP SC SERIES COPING

ES-1 TESTED