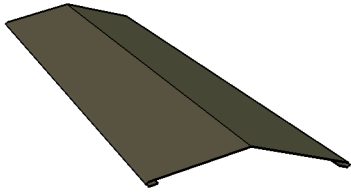
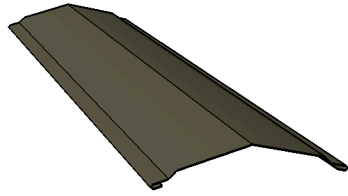


CMP SERIES 2500

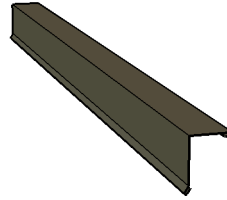
STRAIGHT RIDGE CAP



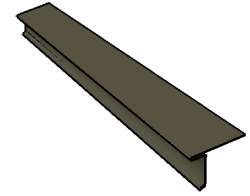
STEPPED RIDGE CAP



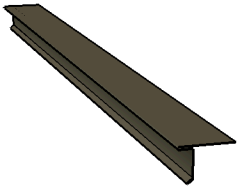
NON LOCKING RAKE



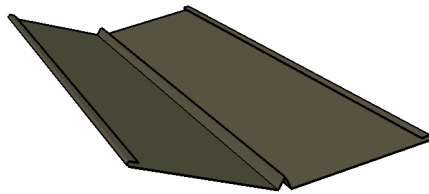
LOCKING DRIP



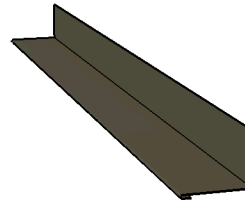
LOCKING RAKE



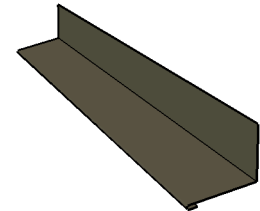
VALLEY



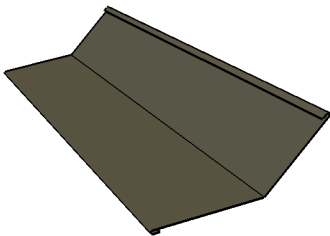
SIDE WALL



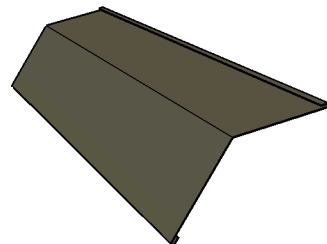
END WALL



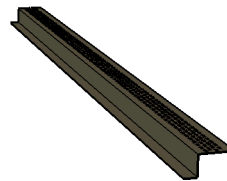
TRANSITION



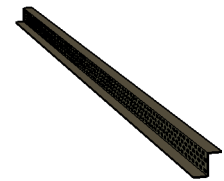
GAMBREL



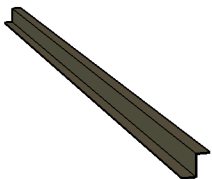
TOP VENTED ZEE



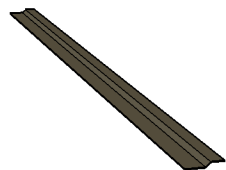
FACE VENTED ZEE



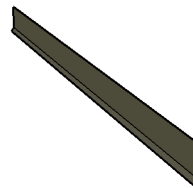
NON VENTED ZEE



OFFSET CLEAT

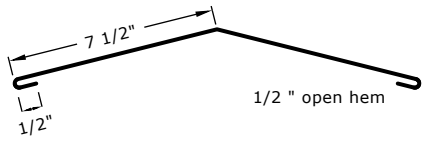


RAKE CLEAT



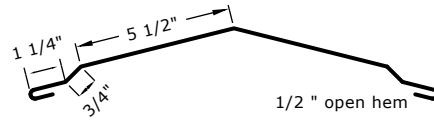
CMP SERIES 2500

STRAIGHT RIDGE CAP



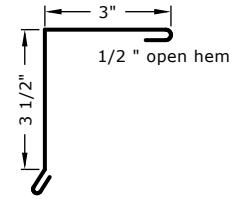
Need Roof Pitch
Requires two pieces of Zee per piece of ridge cap

STEPPED RIDGE CAP



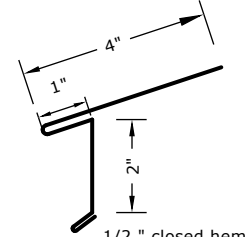
Need Roof Pitch
Requires two pieces of Zee per piece of ridge cap

NON LOCKING RAKE



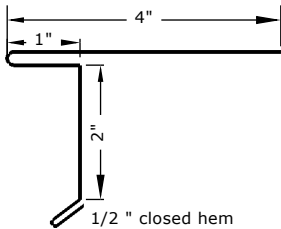
Requires one piece of Non Vented Zee and one piece of Rake Cleat per piece of Non Locking Rake

LOCKING DRIP



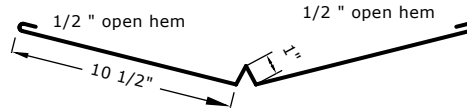
1/2 " closed hem

LOCKING RAKE



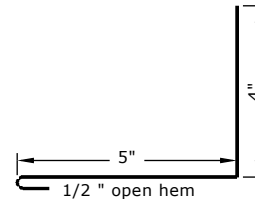
1/2 " closed hem

VALLEY



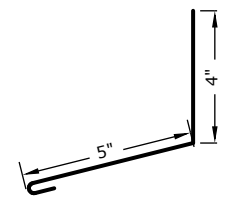
Need Roof Pitch
Requires two pieces of Offset Cleat per Piece of Valley

SIDE WALL



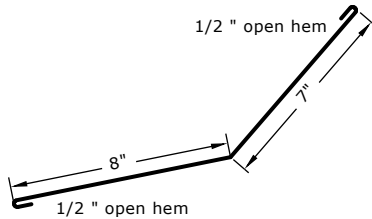
Requires one piece of Non Vented Zee Per piece of Side Wall

END WALL



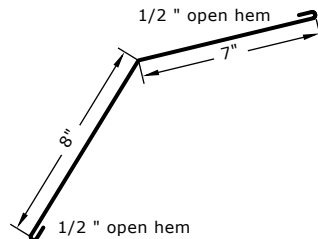
Requires one piece of Non Vented Zee Per piece of End Wall

TRANSITION



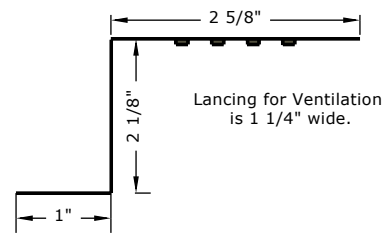
Need Roof Pitch of Upper and Lower Roof Line
Requires one piece of Non Vented Zee and One Piece of Offset Cleat per Transition

GAMBREL



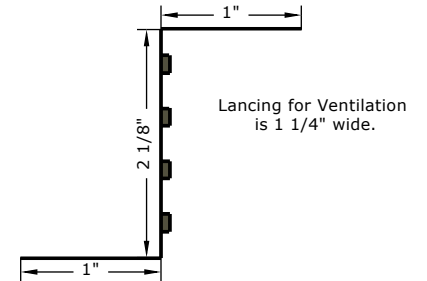
Need Roof Pitch of Upper and Lower Roof Line
Requires one piece of Non Vented Zee and One Piece of Offset Cleat per Gambrel

TOP VENTED ZEE



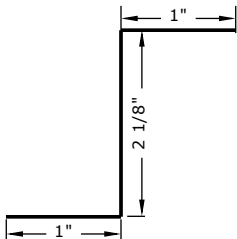
Recommended when Venting is Required using a Stepped Ridge Cap.

FACE VENTED ZEE

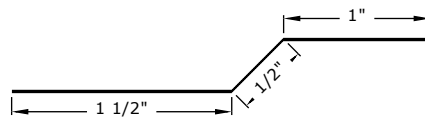


Recommended when Venting is Required using a Straight Ridge Cap.

NON VENTED ZEE



OFFSET CLEAT



RAKE CLEAT

