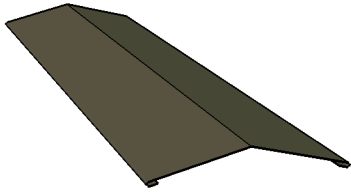
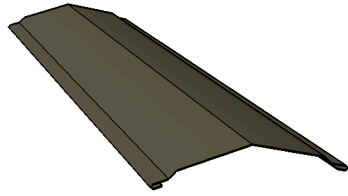


# CMP SERIES 1500

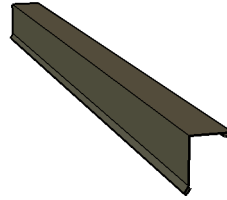
**STRAIGHT RIDGE CAP**



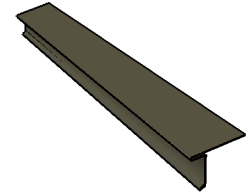
**STEPPED RIDGE CAP**



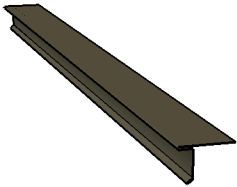
**NON LOCKING RAKE**



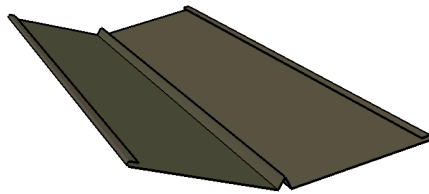
**LOCKING DRIP**



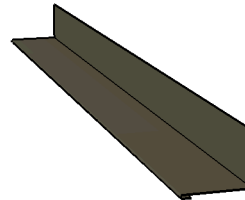
**LOCKING RAKE**



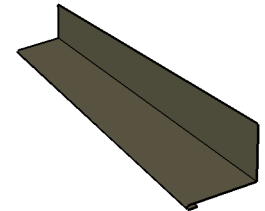
**VALLEY**



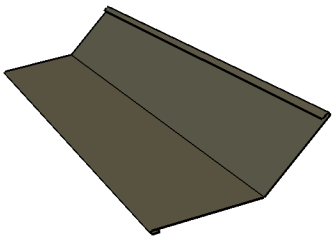
**SIDE WALL**



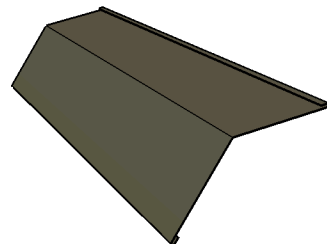
**END WALL**



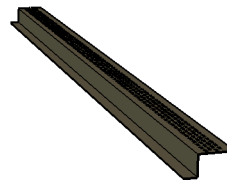
**TRANSITION**



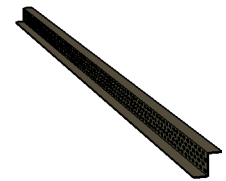
**GAMBREL**



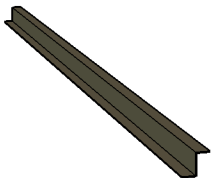
**TOP VENTED ZEE**



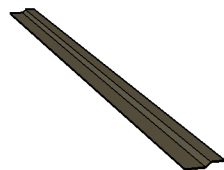
**FACE VENTED ZEE**



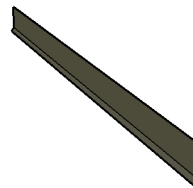
**NON VENTED ZEE**



**OFFSET CLEAT**

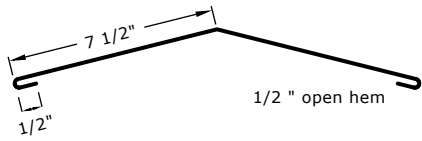


**RAKE CLEAT**



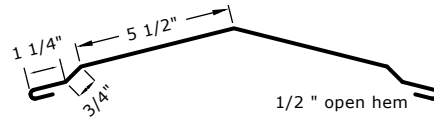
# CMP SERIES 1500

## STRAIGHT RIDGE CAP



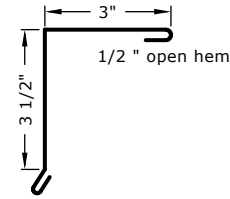
Need Roof Pitch  
Requires two pieces of Zee per piece of ridge cap

## STEPPED RIDGE CAP



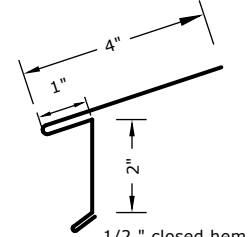
Need Roof Pitch  
Requires two pieces of Zee per piece of ridge cap

## NON LOCKING RAKE



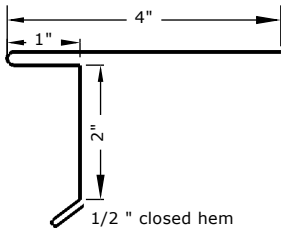
Requires one piece of Non Vented Zee and one piece of Rake Cleat per piece of Non Locking Rake

## LOCKING DRIP



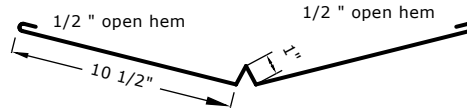
1/2 " closed hem

## LOCKING RAKE



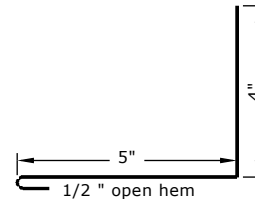
1/2 " closed hem

## VALLEY



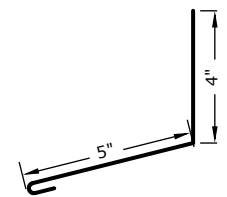
Need Roof Pitch  
Requires two pieces of Offset Cleat per Piece of Valley

## SIDE WALL



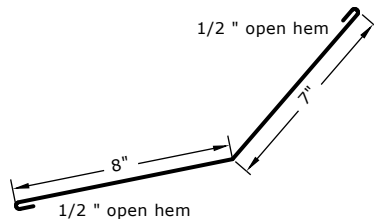
Requires one piece of Non Vented Zee Per piece of Side Wall

## END WALL



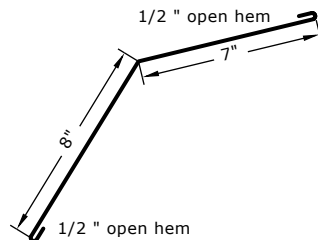
Requires one piece of Non Vented Zee Per piece of End Wall

## TRANSITION



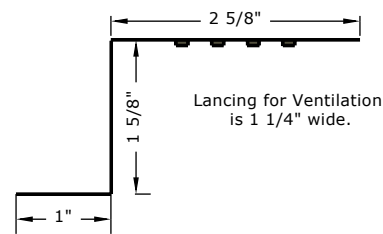
Need Roof Pitch of Upper and Lower Roof Line  
Requires one piece of Non Vented Zee and One Piece of Offset Cleat per Transition

## GAMBREL



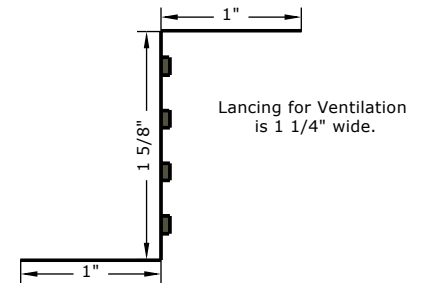
Need Roof Pitch of Upper and Lower Roof Line  
Requires one piece of Non Vented Zee and One Piece of Offset Cleat per Gambrel

## TOP VENTED ZEE



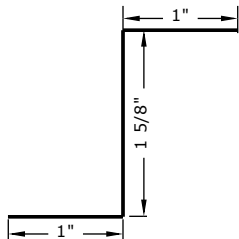
Recommended when Venting is Required using a Stepped Ridge Cap.

## FACE VENTED ZEE

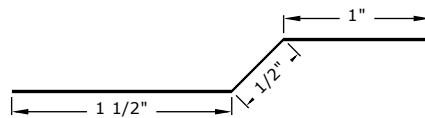


Recommended when Venting is Required using a Straight Ridge Cap.

## NON VENTED ZEE



## OFFSET CLEAT



## RAKE CLEAT

